

OpenEVSE

How to Build a lit push-button

How to build a lit push button for use on an OpenEVSE Electric Vehicle Charging Station.

Written By: Christopher Howell





TOOLS:

- [Soldering Iron](#) (1)



PARTS:

- [Lit Push Button](#) (1)

Step 1 — How to Build a lit push-button



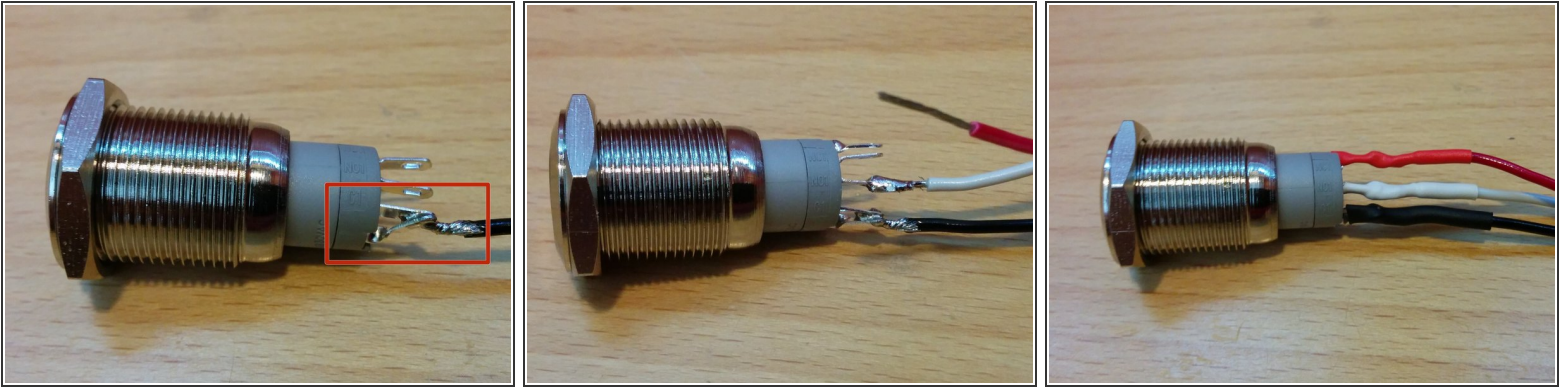
- Remove button components from packaging

Step 2 — Connector preparation



- Strip one-half inch of each other three wires on the connector cable
- Separate insulation on wires and place heat shrink tubing over the corresponding color.

Step 3 — Solder Button



⚠ Solder the ground wire to **BOTH** the negative "-" terminal and the neighboring terminal labeled "C1".

- Solder the white wire to the middle terminal labeled in "NO1".
- Solder the red wire to the positive terminal at the end of the row labeled "+" and shrink the tubing over the connections on all three wires.

ⓘ The unused terminal labeled "NC1" on the button may be clipped off if desired.